



United States Coast Guard Auxiliary



2019 Coast Guard Auxiliary Uniforms

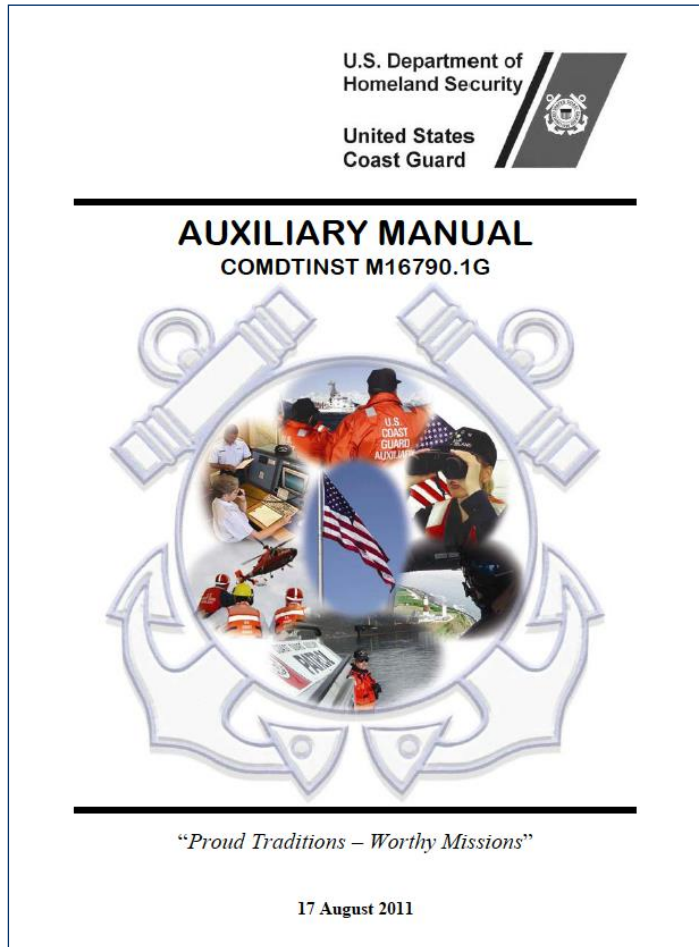
Revised & Approved— December 2018

Topics

- Uniform standards
- Types of uniforms
- Uniform descriptions
- Proper placement of ribbons, name tags & devices
- Grooming standards
- Where to procure your uniforms



Uniform Standards



*The word “**uniform**” implies consistency and conformance to certain standards.*

Auxiliary Manual COMDTINST M16790.1G
Chapter 10 – Section C.3
“Uniformity in Grooming and Appearance”



Uniform Standards

- Wear the uniform with Pride!
- YOU are a representative of the U.S. Coast Guard and the U.S. Coast Guard Auxiliary.
- Elected and Appointed officers are expected to set the example.
- Human Resources staff (FSO/SO/DSO-HR) can assist with your Uniform questions.
- Uniform Standards are established by:
 - USCG Uniform Regulations Manual – COMDINST M1020.6 (series)
 - USCG Auxiliary Manual – COMDINST M16790.1 (series)
 - Uniform Board announcements & ALCOAST/ALAUH messages.



Uniform Board 47 Changes

September 2017

Dress White Uniform Changes

Cold Weather Cap

ODU T-Shirt



Common Uniforms Worn by Coast Guard Auxiliary Members



UNIFORMS OF THE DAY

SERVICE
DRESS BLUE



TROPICAL
BLUE



WINTER
DRESS BLUE



OPERATIONAL
DRESS
UNIFORM (ODU)



LIKELY FIRST UNIFORMS

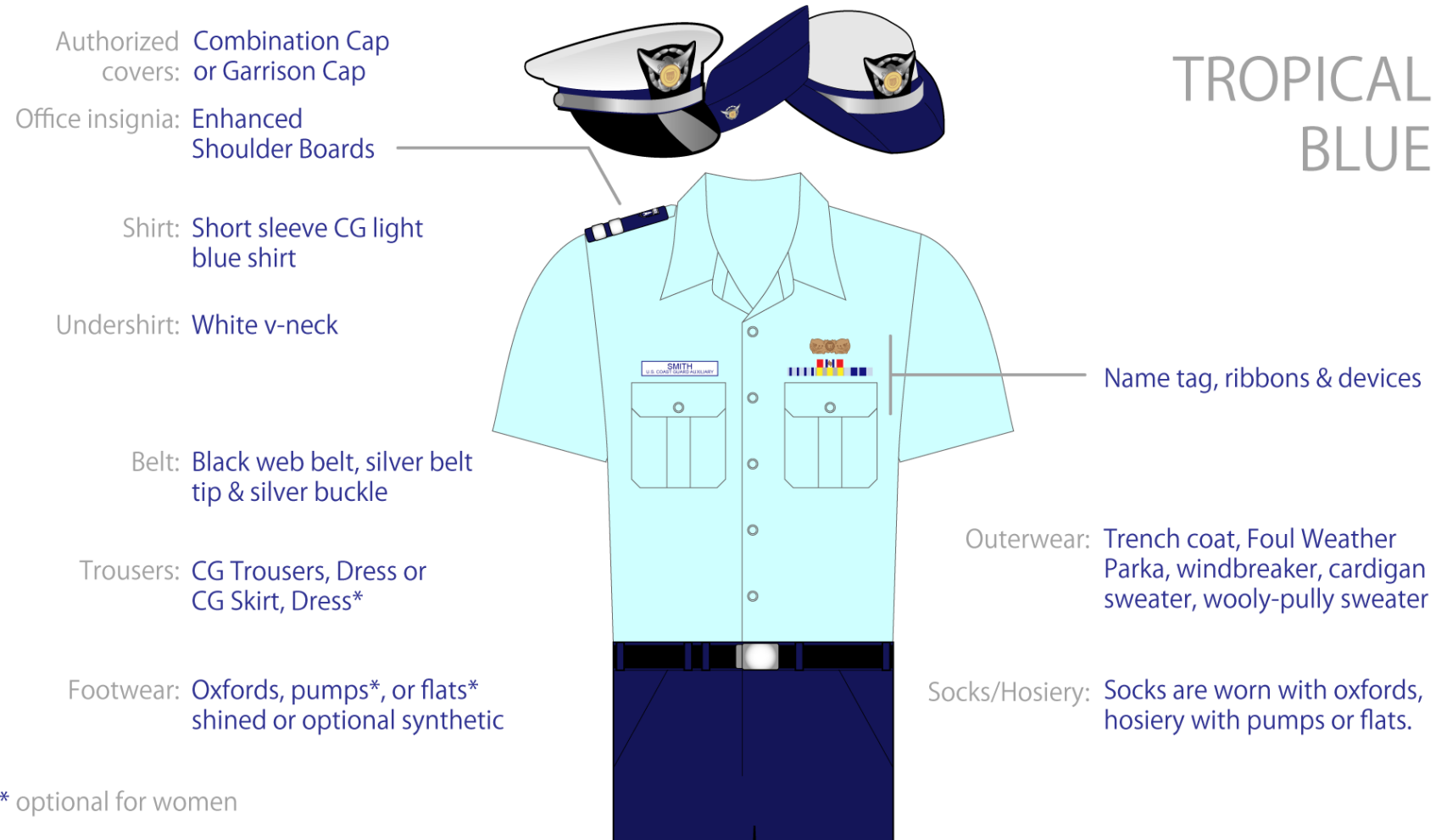


Tropical Blue

- Light blue CG uniform shirt, short sleeve.
- The Overblouse or Maternity shirt, untucked, may be worn by women in lieu of the light blue CG uniform shirt.
- CG Service Dress Blue trousers.
- Black socks and shoes.
- Shoulder boards, name tags, ribbons, qualification devices.
- V-neck T-shirt (No crew neck T-shirt).
- Garrison cap or Combination cap.



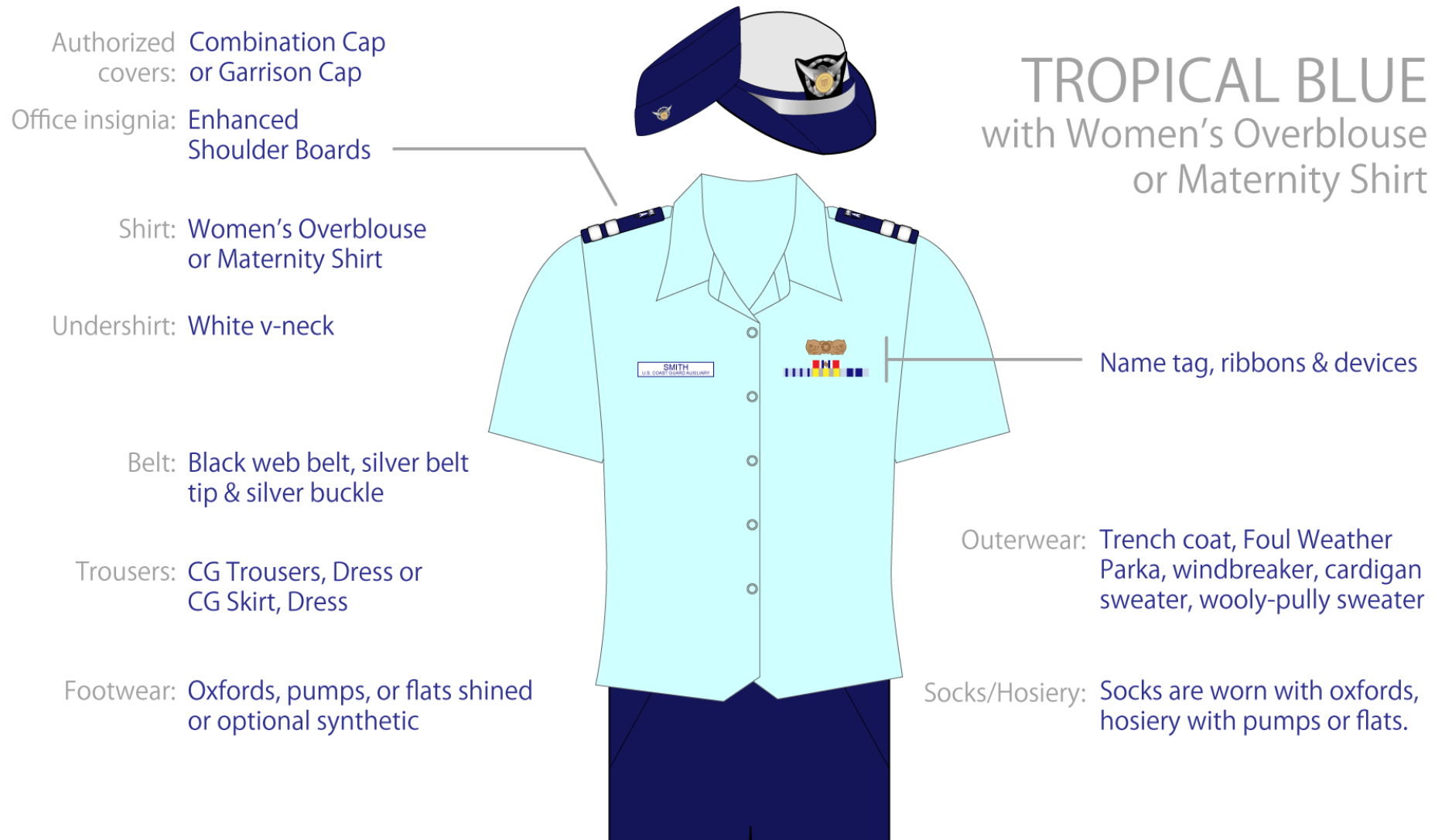
Tropical Blue



TROPICAL
BLUE



Women's Overblouse or Maternity



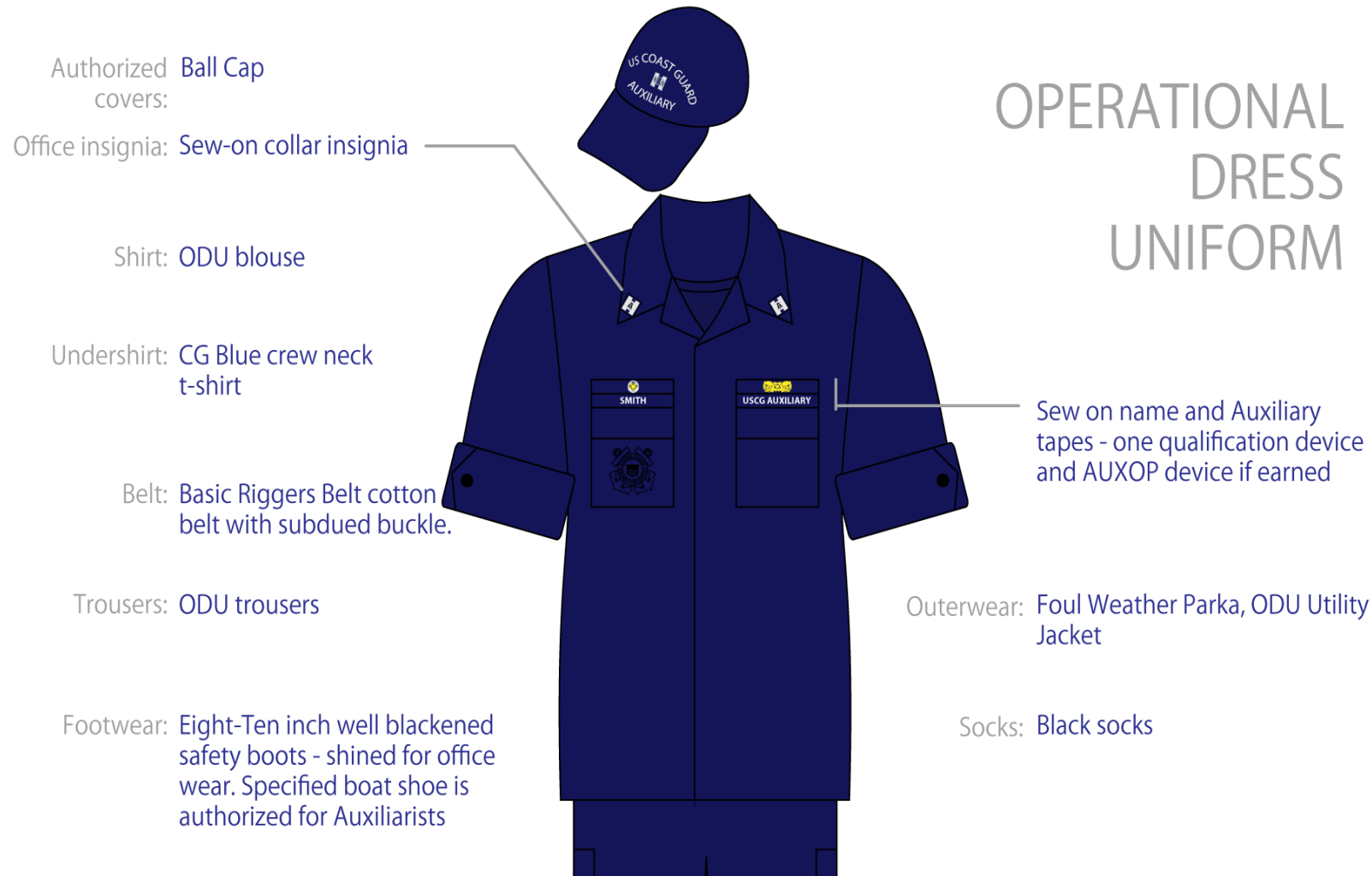
Ribbons, Name Tags, Devices, & Insignia

Auxiliary Devices & Badges
on wearer's **right**

Insignias & Ribbons on
wearer's **left**



Operational Dress Uniform (ODU)



Operational Dress Uniform (ODU)

- Worn for Surface Operations unless otherwise specified or authorized (Districts vary on specifics).
- May be worn while commuting.
- Sleeves shall be worn up or down unless specifically prescribed.



Operational Dress Uniform (ODU)

- Boots, high top, lace up are worn.
- Deck shoe is an authorized option for operations and or vessel exams, when wearing either ODU, Optional ODU, Optional VE, or Hot Weather uniform.
- ODU trousers are worn bloused with boots. They are worn unbloused with boat shoes, only when conducting vessel safety checks, underway on an Auxiliary operational facility, commuting to or from a point of Auxiliary patrol or safety check activity, or specifically authorized by a Coast Guard order issuing authority.



Operational Dress Uniform (ODU)

- Sew-on cloth nametapes, USCG AUXILIARY, and devices must be the full width directly above pocket.
- Sew-on or Velcro cloth member and officer collar devices (depending on District policy), are worn with black “A” for officer devices. Collar and Cap devices must match.
- Direct embroidery, plastic name tags, and metal devices other than device worn on the ballcap are prohibited.



Operational Dress Uniform (ODU)

- The dark blue crew neck tee-shirt with or without “USCG AUXILIARY” embroidered or screen printed on the front left chest is worn.
- **(Plain blue ODU T-shirt is now authorized per UB 47).**
- Belt is black web belt with subdued open-faced buckle or basic riggers belt.
- USCG Auxiliary ball cap, or Tilley hat obtained from an appropriate source may be worn with the ODU. Cap devices must match the collar devices.
- Tucked version of the ODU is authorized for Auxiliary wear until no longer serviceable and not authorized for wear with untucked blouse **(No longer serviceable means no holes, tears, faded).**



Winter Dress Blue

- Available for wear between November 1 to March 31.
- May be worn unless Service Dress Blue is more appropriate or specified.
- Coast Guard blue winter shirt (long sleeve) and blue trousers.
- Coast Guard blue tie.
- Black shoe and socks.
- Metal collar devices, (placed one inch from front and lower portion of the collar).
- Name tag, ribbons, qualification devices.
- Garrison or Combination cap.
- Approved outerwear:
 - Windbreaker, Bridge Coat, Trench Coat, Foul Weather Parka, Cardigan Sweater or Wooly-Pully sweater



Winter Dress Blue

Authorized Combination Cap
covers: or Garrison Cap

Office insignia: Collar insignia

Shirt: Winter Dress Blue shirt

Undershirt: White v-neck

Belt: Black web belt, silver belt
tip & silver buckle

Trousers: CG Trousers, Dress or
CG Skirt, Dress*

Footwear: Oxfords, pumps*, or flats*
shined or optional synthetic

* optional for women



WINTER DRESS BLUE

Name tag, ribbons & devices

Tie:
CG Four-in-hand for men &
women

Outerwear:
Trench coat, bridge coat, Foul
Weather Parka, windbreaker,
cardigan sweater, wooly-pully
sweater

Socks/Hosiery:
Socks are worn with oxfords,
hosiery with pumps or flats.



How to wear the U.S. Coast Guard Auxiliary uniform

General Information

- Hats should be worn squarely on the head.
- Tropical shirt will be worn with the button open only.
- Sleeves should not be rolled up, except when authorized.
- Bottom of pants should touch shoe tops.
- Women's skirt hemline will be:
 - no higher than the crease in the back of the knee.
 - no lower than two inches below the crease in the back of the knee.
- Bracelets, necklaces, wristwatches, ID bracelets and rings must be conservative, noncontroversial, and in good taste.
- No more than 2 rings on each hand.



Dress Uniforms

Service Dress
Blue **Bravo**



Service Dress Blue
Alpha Option



Dinner Dress
Blue



Dinner Dress Blue
Jacket



Dinner Dress White
Jacket



Service Dress Blue (SDB) Bravo- Women

Authorized Combination Cap
covers: or Garrison Cap

Office insignia: Sleeve lace & shoulder
boards on light blue shirt

Shirt: CG light blue shirt
short or long sleeve

Undershirt: White v-neck

Belt: Black web belt, silver belt
tip & silver buckle

Trousers: CG Trousers, Dress or
CG Skirt, Dress

Footwear: Oxfords, pumps, or flats
shined or optional
synthetic



SERVICE DRESS BLUE, FEMALE

Jacket: Service Dress Blue
jacket

Name tag, ribbons & devices

Tie:
Blue tab tie

Outerwear:
Trench coat, bridge coat, Foul
Weather Parka (windbreaker,
cardigan sweater, wooly-pully
sweater)

Socks/Hosiery:
Socks are worn with oxfords,
hosiery with pumps or flats.



Service Dress Blue (SDB) - Women

- CG Service Dress Blue coat with silver buttons.
- CG Service Dress Blue trousers.
- Light blue CG uniform shirt, long or short sleeve.
- Blue skirt or pants.
- Coast Guard Blue Tab Tie.
- Stockings (plain) with the skirt.
- Black pumps with low heels, dress shoes, or flats shined.
- Sleeve lace with sleeve shield.
- Worn with ribbons, breast insignia, qualification devices and name tag.
- Combination Cap or Garrison Cap are authorized for wear.
- Appropriate for classrooms, meetings and similar functions.
- Outerwear:
 - Trench Coat, Bridge Coat, Foul Weather Parka Windbreaker, Cardigan Sweater, or Woolly-Pully sweater may be worn in lieu of SDB jacket, when appropriate.

Service Dress Blue ALPHA- Option The Service Dress Blue Alpha uniform requires a white long-sleeved shirt and may be prescribed by Coast Guard command authority or Auxiliary unit leadership for evening functions and for situations that require more formality than the Service Dress Blue Bravo uniform but less than the Full Dress or Dinner Dress uniforms. It is appropriate for solemn occasions such as funerals.



Service Dress Blue (SDB) – Bravo Men

Authorized Combination Cap
covers: or Garrison Cap

Office insignia: Sleeve lace & shoulder
boards on light blue shirt

Shirt: CG light blue shirt
short or long sleeve

Undershirt: White v-neck

Belt: Black web belt, silver belt
tip & silver buckle

Trousers: CG Trousers, Dress

Footwear: Oxfords, shined or
optional synthetic



SERVICE DRESS BLUE, MALE

Jacket: Service Dress Blue
jacket

Name tag, ribbons & devices

Tie:
CG Four-in-hand

Outerwear:
Trench coat, bridge coat, Foul
Weather Parka (windbreaker,
cardigan sweater, wooly-pully
sweater)

Socks/Hosiery:
Socks are worn with oxfords

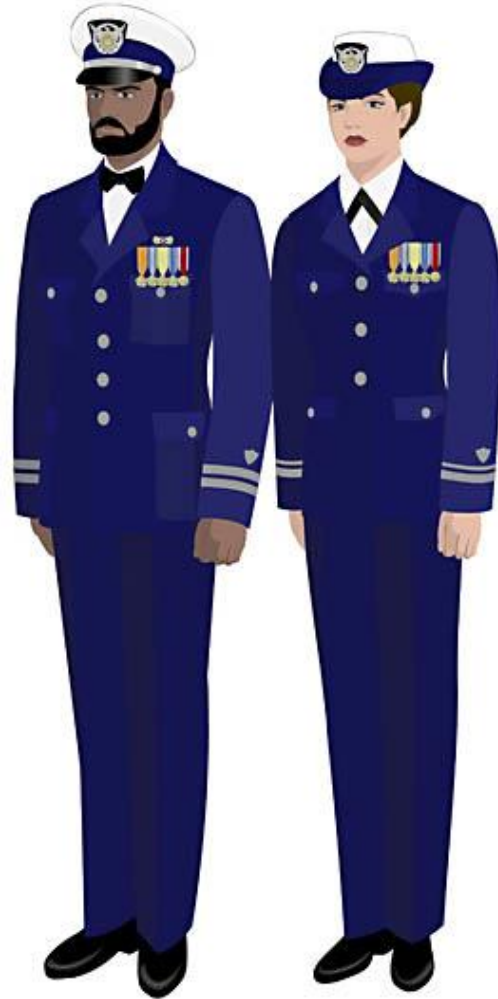


Service Dress Blue (SDB) Bravo - Men

- CG Service Dress Blue coat with silver buttons.
- CG Service Dress Blue trousers.
- Light blue CG uniform shirt, long or short sleeve.
- Black socks and shoes.
- Sleeve lace with sleeve shield.
- Worn with ribbons, breast insignia, qualification devices and name tag.
- Combination cap and Garrison cap are authorized for wear.
- Appropriate for classrooms, meetings and similar functions.
- Outerwear:
 - Trench Coat, Bridge Coat, Foul Weather Parka, Windbreaker, Cardigan Sweater, or Wooly Pully sweater may be worn in lieu of SDB jacket, when appropriate.
- **Service Dress Blue ALPHA-** Option The Service Dress Blue Alpha uniform requires a white long-sleeved shirt and may be prescribed by Coast Guard command authority or Auxiliary unit leadership for evening functions and for situations that require more formality than the Service Dress Blue Bravo uniform but less than the Full Dress or Dinner Dress uniforms. It is appropriate for solemn occasions such as funerals.



Dinner Dress Blue Uniform



Dinner Dress Blue Uniform

- The Dinner Dress Blue uniform may be prescribed and worn for formal evening occasions.
- Uniform components are the same as Service Dress Blue, but with white shirt and plain male black bow tie or female black neck tab.
- Miniature medals and devices are worn.
- Name tag is not worn.
- The Combination Cap is worn.



Dinner Dress Blue Jacket Uniform



Dinner Dress Blue Jacket Uniform

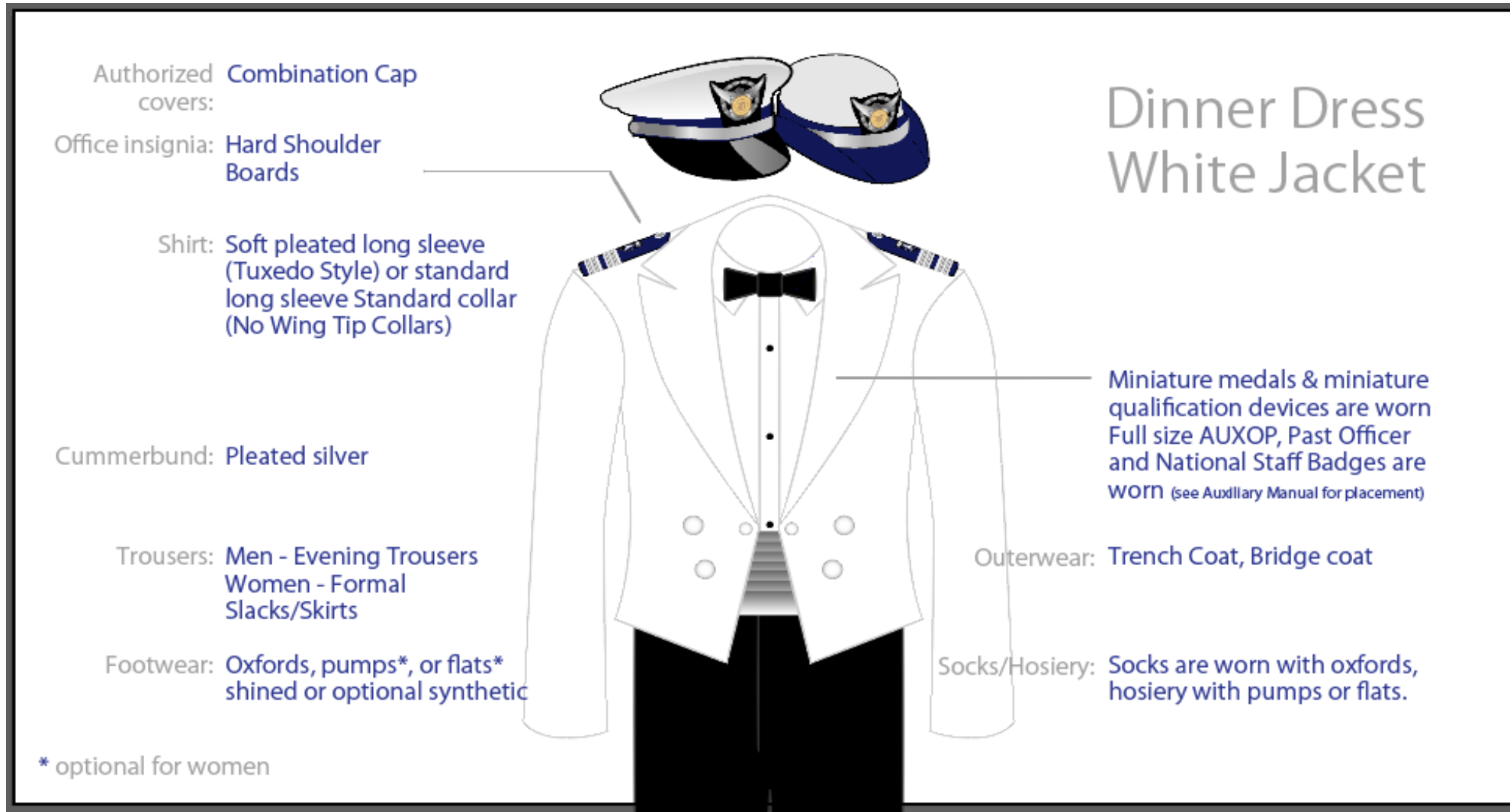
- The Dinner Dress Blue Jacket uniform may be prescribed and worn for formal evening occasions.
- The jacket is the standard U.S. Coast Guard / U. S. Navy Dinner Dress Blue jacket uniform which is black in color.
- Women's floor length skirt.
- Sleeve piping are worn on the jacket.
- Four large silver Coast Guard Auxiliary buttons for male jacket and six small Coast Guard Auxiliary buttons for female jackets.
- A silver chain with medium size Auxiliary buttons on each end close the male jacket and female jacket is worn open.
- A black bow (male) and black tab (Female).
- The Combination cap is worn.



Dinner Dress White Uniform



Dinner Dress White Jacket Uniform



Dinner Dress White Jacket Uniform

- The Dinner Dress White Jacket uniform may be prescribed and worn for formal evening occasions.
- The jacket is the standard U.S. Coast Guard / U.S. Navy White Mess jacket.
- Women's floor length skirt.
- Hard shoulder boards are worn on the jacket.
- The two gold buttons down each forepart are replaced with two large silver Coast Guard Auxiliary buttons.
- A silver chain with medium size Auxiliary buttons on each end close the jacket at the button holes.
- A black bow (male) and black tab (Female).
- The Combination cap is worn.

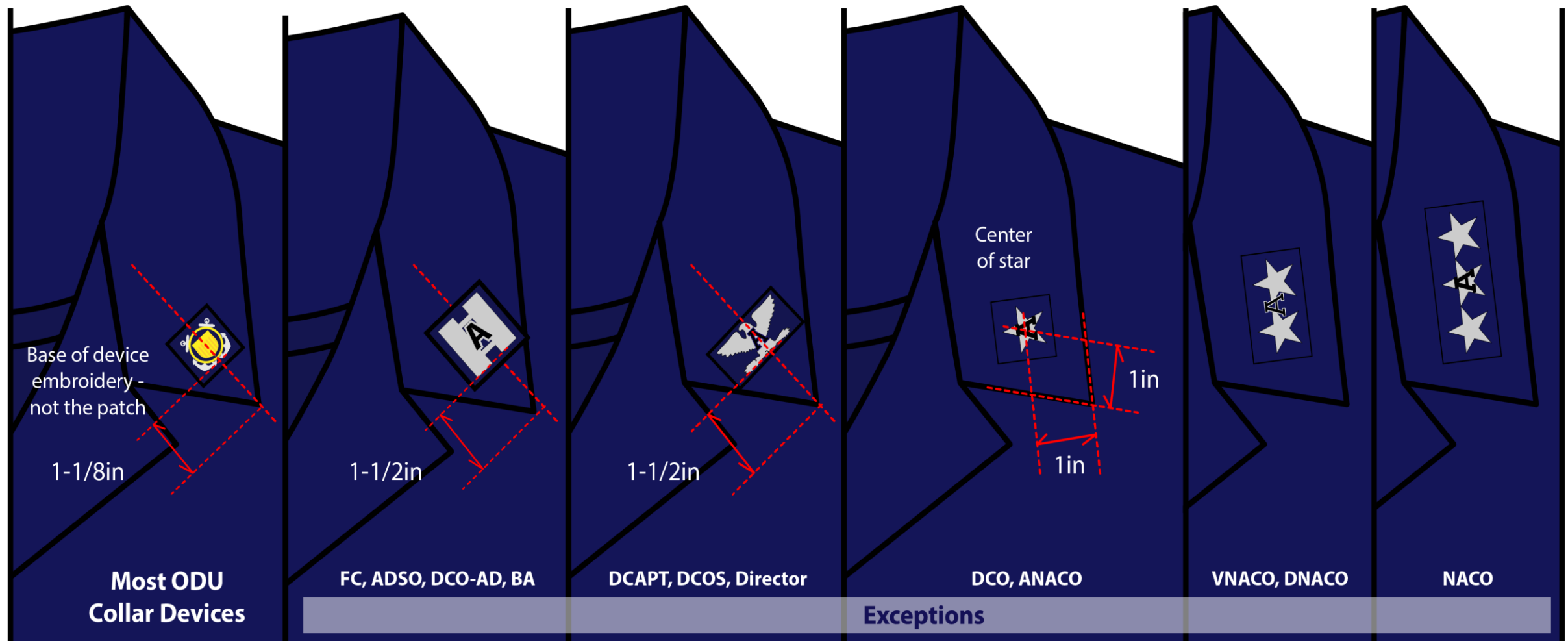


Dress White Uniform

- **The Dress White uniform is for wear for Commodores and AUX Clergy as prescribed**
- The jacket is the standard Coast Guard (Navy) White jacket
- Women's floor length skirt
- Hard shoulder boards are worn on the jacket
- Silver Coast Guard Auxiliary buttons
- White socks
- White Dress shoes
- Ribbons, breast devices, and name plate



ODU Member and Office Devices



ODU Outerwear



Foul Weather Parka II (FWP)
(note: the fleece FWP liner with insignia tab is authorized as stand alone outerwear).



ODU Utility Jacket
(Enhanced Foul Weather liner) ***This Liner can only be worn with the Foul Weather Parka or the ODU Uniform. It cannot be worn as a stand alone item with any other uniform.***

Foul Weather Parka Devices

- The Foul Weather Parka (FWP II) fabric office device is a mandatory uniform item for the parka shell.
- The device is required on the Parka Liner/ODU Utility Jacket when worn as a standalone exterior garment.
- Wear of metal office insignia is not authorized.



Foul Weather Parka Wear

- The Foul Weather Parka II (worn with or without the liner) is authorized for wear with the Operational Dress Uniform (ODU), Tropical Blue, Winter Dress Blue, and Service Dress Blue.
- The Parka Liner/ODU Utility Jacket can only be worn as standalone outerwear with the Operational Dress Uniform (ODU).

FOUL WEATHER PARKA II



Detailed to Foul Weather Parka Wear

FOUL WEATHER PARKA II



“A. AUTHORIZE WEAR OF **FOUL WEATHER PARKA II WITH SDB**: The FWPII (with or without the liner) is authorized for wear with the Operational Dress Uniform (ODU), Tropical Blue (TB), Winter Dress Blue (WDB), and Service Dress Blue (SDB). The trench coat remains a required seabag item and may be prescribed for wear with the SDB and other uniforms. However, the FWPII provides superior weather protection. The previous limitations on the wear of the FWPII with the TB and WDB uniforms are removed. Commands are reminded that for inspections and occasions where more uniformity is required, they may prescribe seabag outerwear.”

- ALCGPSC 171/14 RESULTS OF UNIFORM BOARD 46 - 08DEC2014

Note for Auxiliaries: This should not be taken to mean the ODU Utility Jacket can be worn as outerwear with Service Dress Blue, Winter Dress Blue, or Tropical Blue.



Wooley Pulley



- Worn with Tropical Blue Uniform.
- Worn with enhanced shoulder boards only when worn with Tropical uniform.
- Worn with Winter Dress Blue.
- **Note: When worn with Winter Dress Blue, no enhanced shoulder boards are worn, insignias are worn on collars only.**

Cardigan Sweater



- Worn with Tropical Blue Uniform.
- Worn with enhanced shoulder boards. only when worn with Tropical uniform.
- All buttons shall be buttoned to the top.
- **Note: When worn with Winter Dress Blue, no enhanced shoulder boards are worn, insignias are worn on collars only.**

Left Side of Uniform

- Ribbons & Qualification Insignias.
- Lowest row of ribbons is centered ¼" above top of the left pocket.
- 1st breast insignia is centered ¼" above ribbons.
- 2nd breast insignia is centered ¼" below top of left pocket.



Right Side of Uniform

- Devices & Badges
 - Name plate is centered 1/4" above top of right pocket.
 - AUXOP device is centered 1/4" above the name plate.
 - Past Officer device is center on left pocket flap between the button and flap seem.
 - Recruiting badge is centered on right pocket.
 - National Staff badge is centered on left pocket.
 - Women may wear the staff badge above the name plate, and wear the AUXOP device below the name tag.



Women's Overblouse & Maternity Uniform Shirt

- These uniforms shirts are very similar to the Tropical Light Blue Uniform Shirt.
- The difference is that neither of these uniform items have pockets on the left or right sides of the shirt and is designed to be worn untucked outside of the trousers.
- Remember, the Tropical Blue Uniform Shirt with pockets should never be worn untucked.
- The Name tag on the women's light blue over blouse or maternity uniform, will be worn so that it is level and centered on the right side of the shirtfront in the same approximate position that it would be worn on a properly fitting light blue shirt with pockets. Individuals are to adjust placement of nametag to allow for shirt size and individual body proportions to achieve appropriate appearance.
- Office and other insignia, badges, and nametags are worn in the same manner on the overblouse and maternity uniforms as on the corresponding uniforms they replace. Minor adjustments in placement are authorized to prevent discomfort and to present an orderly and balanced appearance.



AUX Food Service Prep Uniform

Authorized Ball Cap
covers:

Shirt: Navy blue polo shirt with
Auxiliary logo

Undershirt: Navy ODU T-shirt
(optional)

Belt: Brown belt

Trousers: Khaki

Footwear: Athletic shoes or
chef's clogs



No name or devices

Socks/Hosiery: White socks

Prep
Uniform



AUX Food Service Polo Uniform

- Auxiliary ODU Ball Cap with Member Device only
- Navy blue polo shirt with Auxiliary logo only
- ODU T-shirt (optional)
- Khaki trousers
- Brown leather belt
- White socks
- Athletic shoes or Chef's clogs

AUX Food Service Work Uniform

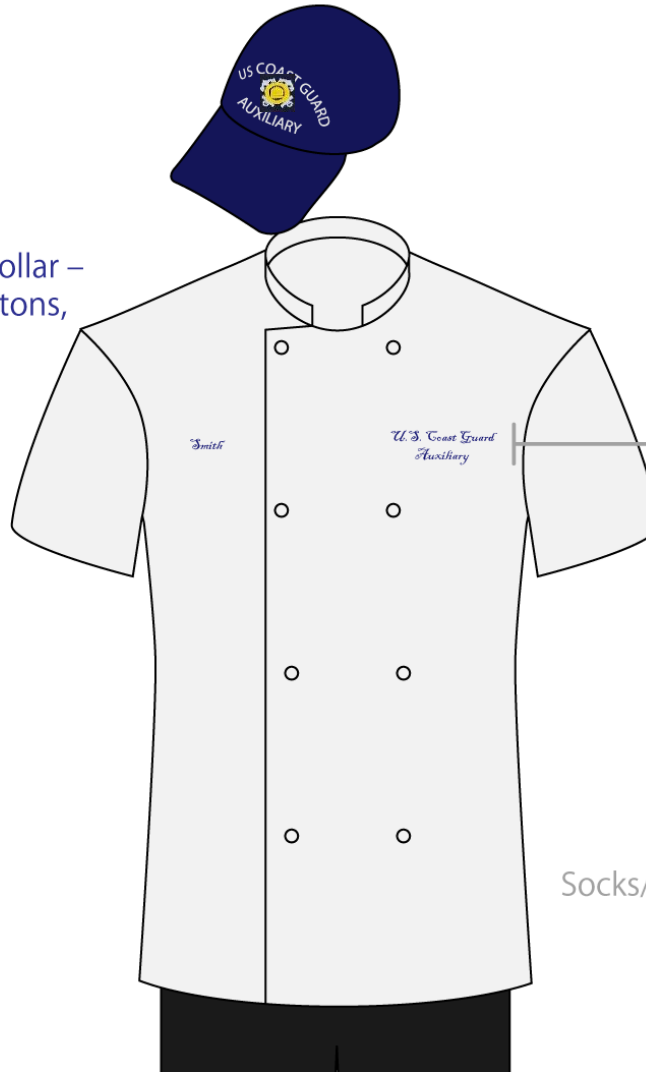
Authorized Ball Cap or white covers: chef's skull cap

Shirt: White Chef's coat
(Short sleeved, Stand up collar – no trim, clear or white buttons, no collar devices, logos or decorations)

Undershirt: White

Trousers: Black or ODU

Footwear: Safety boots or shoes, black athletic shoes or chef's clogs



Work
Uniform
ODUs may be worn

Last name on right
U.S. Coast Guard Auxiliary on
left in blue or black, italic,
upper and lower case
embroidery

Socks/Hosiery: White or black socks



AUX Food Service Work Uniform

- Auxiliary ODU Ball Cap with Member Device only, or chef's skull cap
- White Chef's coat, short sleeve with stand-up collar, no trim, clear or white buttons, no insignia, devices, logos, or decorations
- Black or blue italic upper and lower cased embroidered last name on right breast sided, U.S. Coast Guard Auxiliary on left breast side
- White T-shirt
- Black trousers or ODU pants
- Belt
- White or black socks
- Black athletic shoes or Chef's clogs, or Safety boots if wearing ODU pants



AUX Food Service VIP Uniform

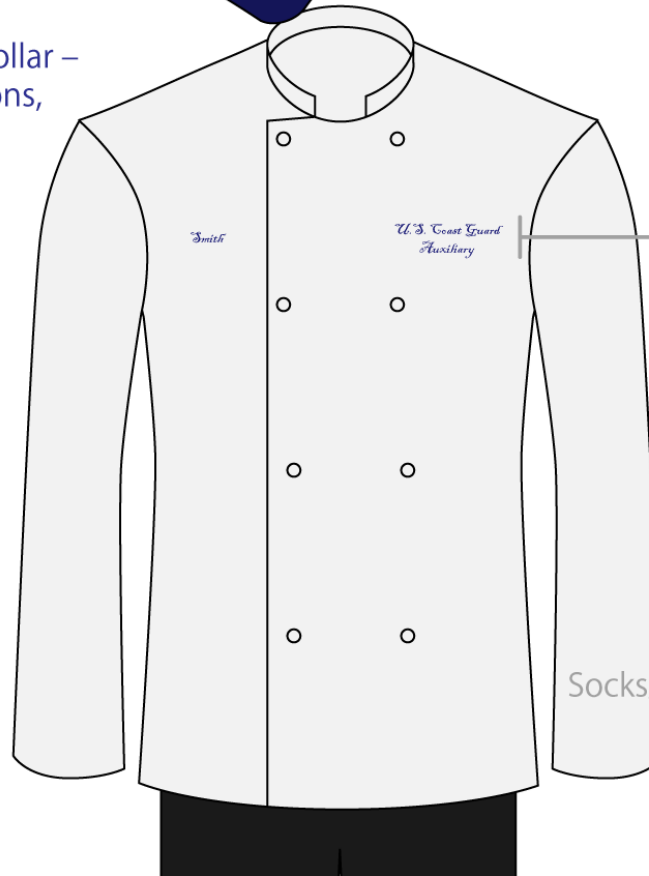
Authorized Ball Cap
covers: (may be optional)

Shirt: White Chef's coat
(Long sleeved, Stand up collar –
no trim, French knot buttons,
no collar devices, logos or
decorations)

Undershirt: White

Trousers: Black

Footwear: Black dress shoes or
chef's clogs



Socks/Hosiery: Black socks

White
Chef's Coat
(VIP Events)

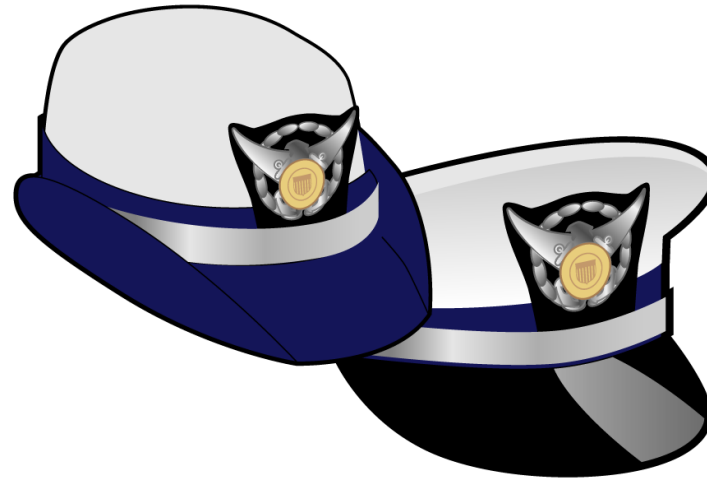


AUX Food Service VIP Uniform

- Auxiliary ODU Ball Cap with Member Device only, or option not to wear
- White Chef's coat, long sleeve with stand up collar, no trim, French knot buttons, no insignia, devices, logos, or decorations
- Black or blue italic upper and lower cased embroidered last name on right breast sided, U.S. Coast Guard Auxiliary on left breast side
- White T-shirt
- Black trousers
- Belt
- Black socks
- Black Dress shoes or Chef's clogs



Coast Guard Auxiliary Covers



Cap devices

- Metal device on your ball cap must match ODU collar devices.
- Metal device on your garrison cap must match your shoulder boards or collar devices.
- Small metal devices are worn on caps for men's and women's uniforms.
- Large metal devices are reserved for outerwear only.



Which Cover to Wear

Uniform Quick Reference: COVERS

	SERVICE DRESS BLUE	TROPICAL BLUE	WINTER DRESS BLUE <small>Authorized 01NOV to 31MAR</small>	OPERATIONAL DRESS UNIFORM
				
Combination Cap				✗
Garrison Cap				✗
ODU Material Ball Cap	✗	✗	✗	
Watch Cap & Tilley	✗	✗	✗	See AUXMAN Ch 10. D.3.f & D.3.g for specifics



Combination Cap

- Can be worn with most uniforms.
- Men's and Women's styles.
- The combination caps for Auxiliarists holding DCDR or above (and commensurate) office positions are adorned with one or two rows of silver oak leaves and acorns.
- Blue cap band for Auxiliary.
- Silver braided cap strap.
- Auxiliary silver screw posts.



Garrison Cap

- Can be worn with Tropical Blue, Winter Dress Blue, and Flight Suit
- May be authorized for wear with Service Dress Blue

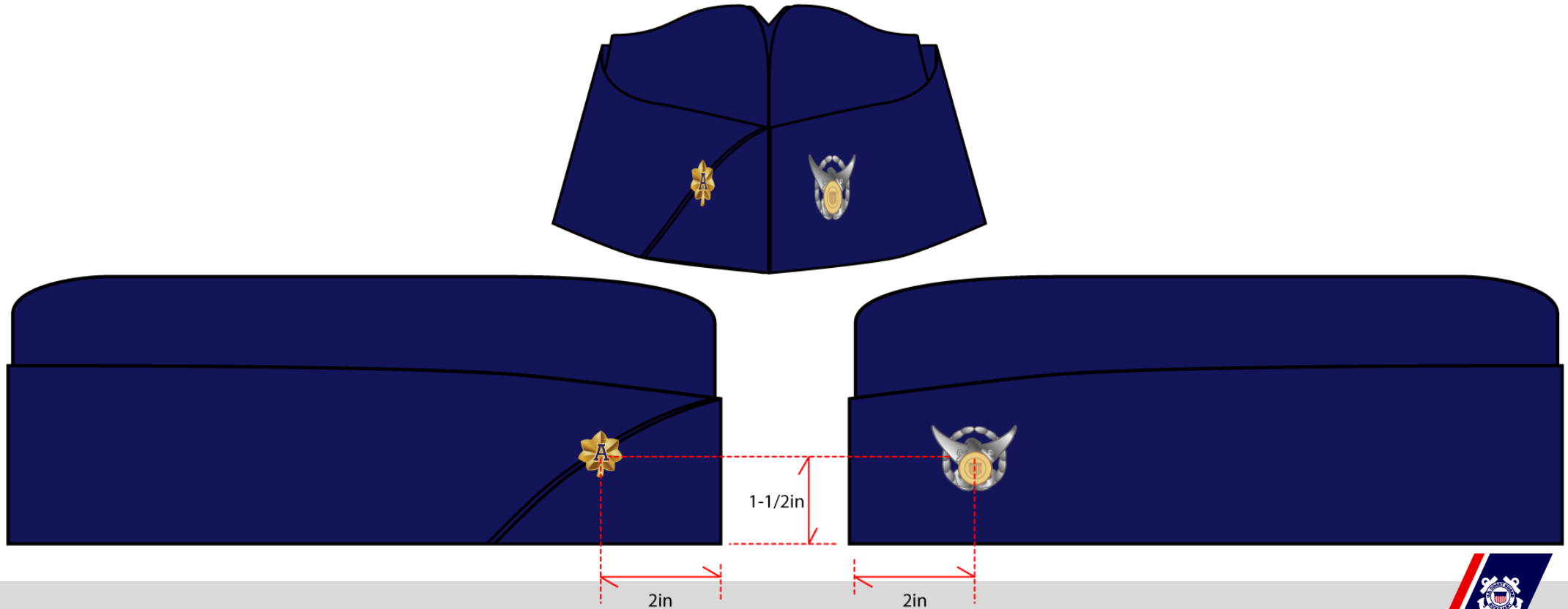


* DEC 2014 - See ALCGPSC 171/14 SUBJ: RESULTS OF UNIFORM BOARD 46 for limitatons



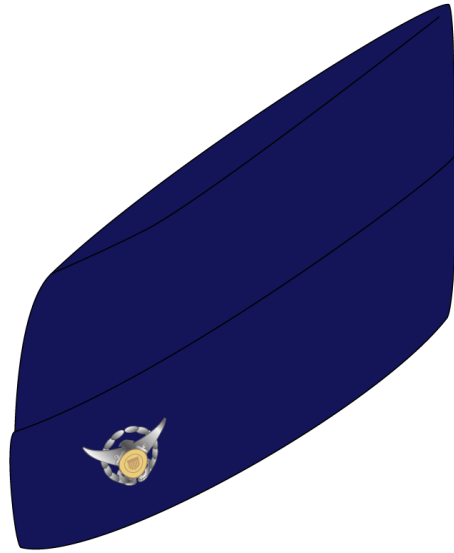
Garrison Cap

- Worn with small cap device (wearer's left) and small metal insignia of office or member insignia (wearer's right).



Detailed to Garrison Cap wear

GARRISON CAP



“B. AUTHORIZE WEAR OF GARRISON CAP WITH SDB: The Garrison Cap may be worn optionally with the SDB unless the Combination Cap is otherwise prescribed. The Combination Cap remains the preferred cover for wear with the SDB, especially for outdoor or formal ceremonies where the cover is integral to the uniform. Commands may prescribe when the Combination Cap is required. The wear of the Garrison Cap with the SDB allows for greater flexibility during travel and while transiting between outdoor and indoor spaces.”

- ALCGPSC 171/14 RESULTS OF UNIFORM BOARD 46 - 08DEC2014



ODU Ball Cap



ODU BALL CAP



ODU Ball Cap

- Note: Auxiliary ball caps must be obtained from:
 - USCG Exchange (CGEX)
 - AUXCEN
 - UDC
- Only ball caps made of ODU material ball cap are authorized for use
- Embroidered cap ornamentation (acorns and leaves) are no longer authorized
- Small metal office of insignia worn or member device,
Insignia on cap must be the same on ODU collar



Watch Cap, Tilley Hat, and Cold Weather Cap

- Note: Auxiliary all caps must be obtained from:

- USCG Exchange (CGEX)
- AUXCEN
- UDC



Tilley Hat

- Worn with ODU or Hot Weather Uniform



Watch Cap

- Black in color
- Worn in cold weather



Cold Weather Cap

- Worn with the USCGAUX Combination Cap Device
- Worn in cold weather

Shoulder Boards

- Hard shoulder boards are worn with Dinner Dress White Jacket or Service Dress White uniforms
- Enhanced shoulder boards are worn on Tropical Blue uniform, cardigan sweater, and the wooly-pully sweater
- Soft shoulder boards (“Loops”) are no longer authorized for wear with any uniform



Shoulder Boards

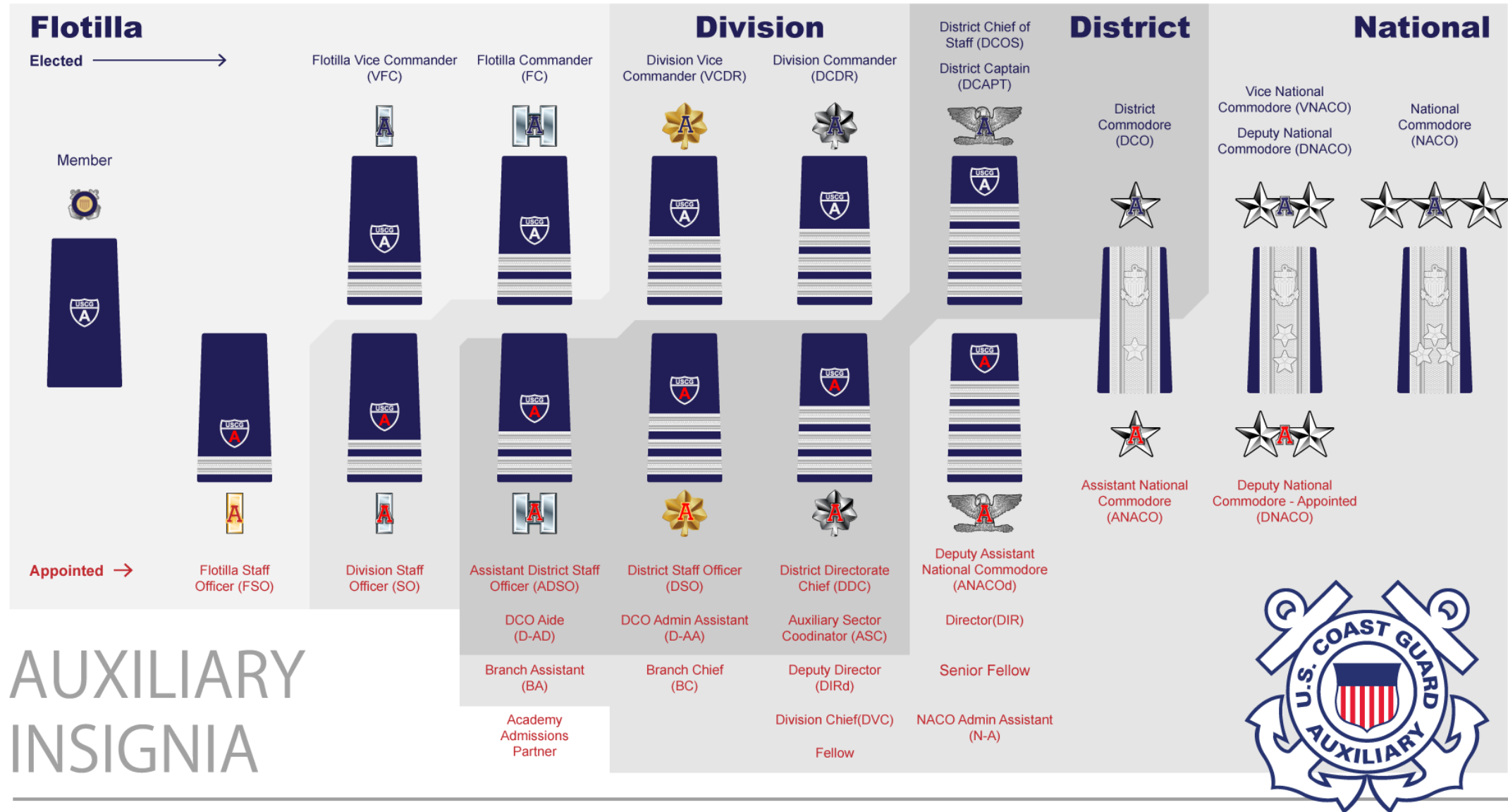


TROPICAL
BLUE

Enhanced
Shoulder
Boards



Auxiliary Insignia

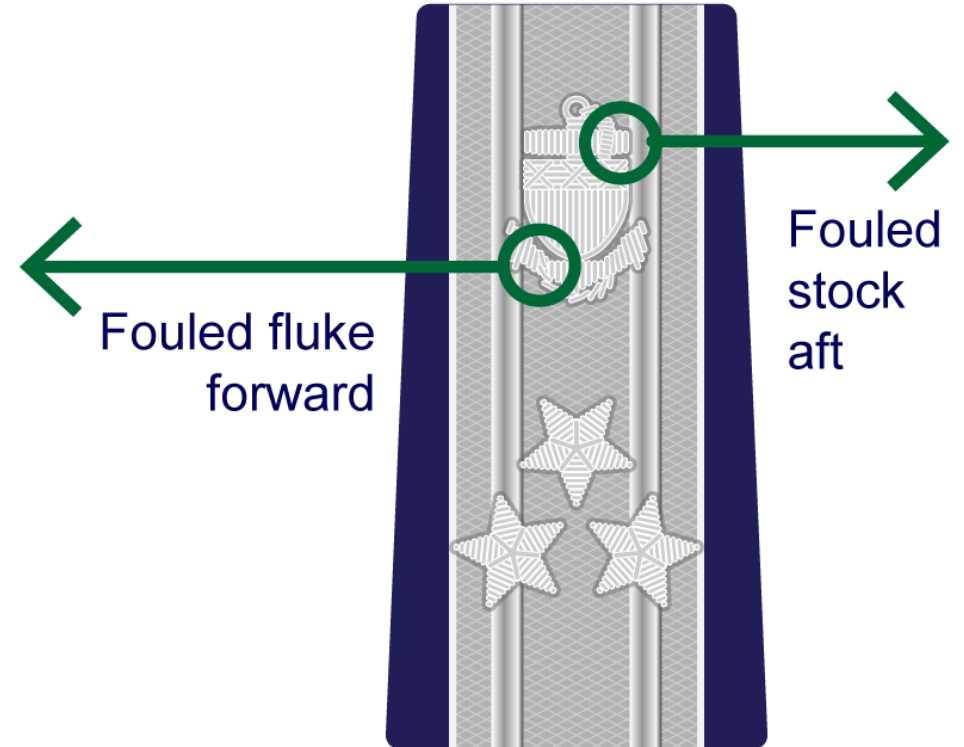


A few items have left and right elements

←
Eagle faces
forward/center
(Coats, Winter Dress Blue, Garrison Cap)

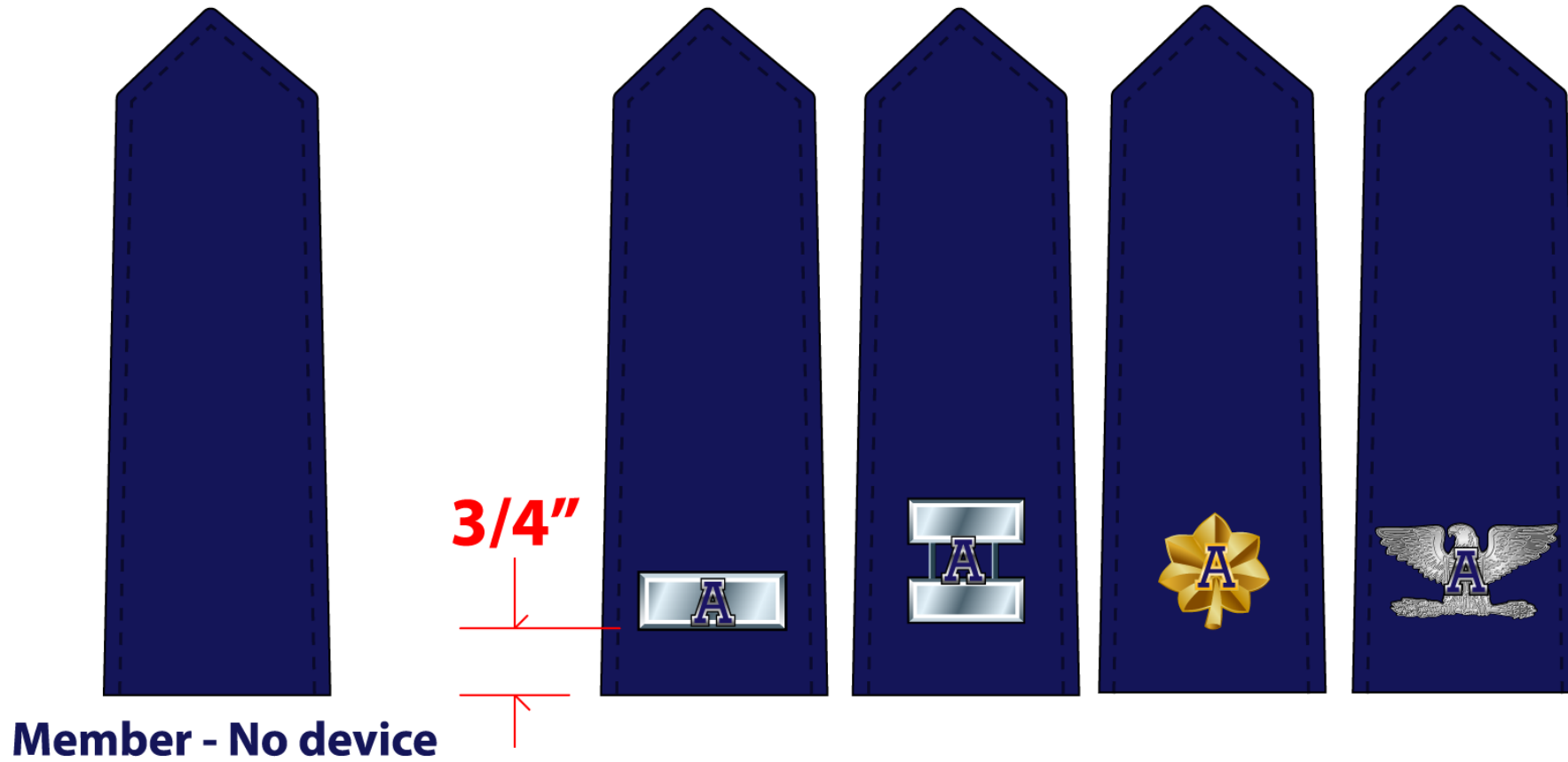


←
Eagle face wearer's
right on ball caps



Outerwear Devices

Windbreaker, Trench Coat, and Bridge Coat use large devices



Blue Blazer Uniform

- The Auxiliary blue blazer may be substituted for all uniforms except the operational dress uniform (ODU)
- The blue blazer is worn with white or gray pants (or skirt), white shirt, and black shoes
- A dark blue or black tie is worn by men, and a blue or black tab is worn by women depending upon the occasion



Blue Blazer Uniform

- The official Auxiliary blazer patch is available through AUXCEN
- It is recommended for wear when the UDC does not stock or offer properly fitting uniform sizes
- The Auxiliary Blue Blazer outfit may be authorized by unit Commanding Officers for wear in office spaces while on duty at Coast Guard units.



Mission Specific Polo Shirts

VESSEL
EXAMINER
POLO



OPERATIONAL
POLO



Vessel Examiner (VE) Polo Shirt

- The VE Polo shirt is authorized for wear as an optional uniform shirt worn as part of the ODU, and Hot Weather uniform.
- The shirt is not authorized for wear on patrol and no insignia, name tags or breast devices shall be worn with the shirt.
- Headgear (when wearing the Polo shirt) shall not display office insignia. Only the member device shall be displayed on the hat.
- The AUXCEN carries the only authorized shirt.



Auxiliary Operations Polo Shirt

- The Auxiliary Operations Polo Shirt may be worn as an alternative to the Operational Dress Uniform (ODU) top, and the Hot Weather Uniform shirt for patrol activities.
- No logos, patches, insignia, name tapes, nor name tags of any type may be worn on this shirt.
- The Auxiliary Operations Polo shirt will be dark blue in color, and have two or three buttons with no pockets. It may be 100 percent cotton or be made of a cotton-polyester blend to facilitate moisture wicking.
- Lettering will be embroidered with USCG AUXILIARY on the left front side, and the LAST NAME of the Auxiliarist on the right front side.
- The ODU ball cap device will be the "member" insignia only.
- The AUXCEN carries the only authorized shirt.



Hot Weather Uniform

Authorized ODU Ball Cap, Sun covers: Hat/Tilley

Shirt: CG Blue crew neck t-shirt with USCG AUXILIARY screen printed/embroidered, Operational polo shirt, VE Polo when conducting VEs

Footwear: Well-blackened 8-inch or 10-inch safety boots; boat shoes (authorized style & color only); all white or all black, low top, athletic shoes with nonskid/ nonmarking soles

Socks: White socks

Outerwear: None



HOT WEATHER UNIFORM

Trousers: ODU trousers hemmed at the knee or 1 inch above the knee

Belt: Black ODU belt with open buckle; optional riggers belt

OR

Trousers: Modified Coast Guard blue utility hemmed at the knee or 1 inch above the knee

Belt: Black web belt with silver buckle & tip



Hot Weather Uniform

- This uniform is authorized as an optional uniform for Auxiliarists only at the discretion of their DIRAUX.
- No USCG equivalent.
- The Director (DIRAUX) shall prescribe the proper season for its wear.
- It is not appropriate for routine office wear.
- Shorts are modified Coast Guard modified blue utility or ODU trousers, cut and hemmed at knee or 1 inch above knee.
- Any shirt worn, must be tucked into the shorts with this uniform.



Hot Weather Uniform

- The Coast Guard dark blue crew neck T-shirt (stenciled or embroidered with the words “USCG AUXILIARY” across the front left chest in white $\frac{3}{4}$ -inch tall block-style letters) is the prescribed shirt with this uniform.
- **Plain blue ODU T-shirt is now authorized per UB 47).**
- The Auxiliary Operations Polo Shirt may be worn with this uniform as an alternative for patrol activities.
- The optional VE shirt may be worn when conducting vessel safety checks (VSCs).



Hot Weather Uniform

- Well-blackened 8-inch or 10-inch safety boots, boat shoes (dark blue or brown leather) or all white or all black, low top, athletic shoes with nonskid/non-marking soles are authorized for Auxiliarists wearing the hot weather uniform.
- Socks shall be all white, athletic type, crew length.
- Belt is black web belt with silver buckle and tip or the optional basic riggers belt.



Hot Weather Uniform

- The Auxiliary ball cap, or the Tilley hat, are the prescribed hats to be worn with this uniform.
- No insignias are worn on the ODU T-shirt, the Operations Polo Shirt, or the VE polo shirt.



FLIGHT SUIT

- **USCG AUXILIARY STANDARD – Standard 04-02-A Flight Suit.doc 16-Apr-04 United States Coast Guard Auxiliary**
- **Standard for Flight Suits for Auxiliary Aviation**
- Auxiliary Office Sew-on Insignia (optional)

Participation Patch, if awarded

- American Flag
- 2.25" x 3.5" (apx)
- Coast Guard
- Auxiliary Flight Suit Patch

Coast Guard or Auxiliary District or C.G. Air Station

Pilot/Aircrew - Wings

- Observer – Auxiliary Emblem
- Qualification (Optional) below name:
- AIRCRAFT COMMANDER, FIRST PILOT, COPILOT, AIRCREW, OBSERVER



FLIGHT SUIT PATCHES



- Auxiliary Office Sew-on Insignia (optional)
- Participation Patch, if awarded
- American Flag
- 2.25" x 3.5" (apx)
- Coast Guard
- Auxiliary Flight Suit Patch
- Coast Guard or Auxiliary District or C.G. Air Station
- 500 HOURS
- Pilot/Aircrew - Wings
- Observer – Auxiliary Emblem
- Qualification (Optional) below name:
- AIRCRAFT COMMANDER, FIRST PILOT, COPILOT, AIRCREW, OBSERVER



Flight Suits

- Authorized for wear only during flight or any aviation mission performed under orders.
- Shall be similar in pattern, color, and design to those worn by active duty Coast Guard aviators.
- Zipped to within 3 inches of top at all times.
- Head gear either garrison cap, baseball cap, or protective gear as required.
- Confirm local standards through your DSO-AV.



Footwear

- Dress shoes = Service Dress Uniforms (heels no higher than 1").
- Boat Shoes = ODU, Hot Weather Uniform.
 - Dark Blue or brown leather, low cut moccasin type.
- ODU Boots = ODU & Hot Weather Uniform.
 - Shall be shined when in a classroom or office.
- Tennis Shoes = Hot Weather Uniform.
 - All white or all black.
- Black socks made of knitted or ribbed on decorated material
 - Not grey, dark blue, etc.
 - No stitching or seam across the toe.
- White socks shall be all white, athletic type, crew length.



Boat Shoes

- Per the Chief Director Final Action 2015-004/15.
- That the Auxiliary Manual, Chapter 10, sub-divisions H.3.e. and H.4.e. be amended to provide authorization for the wear of boat shoes "only" when conducting vessel safety checks, when underway on an Auxiliary operational facility, when commuting to or from a point of Auxiliary patrol or safety check activity, or when specifically authorized by a Coast Guard order issuing authority.



Grooming Standards while in Uniform

- Earrings
 - Men cannot wear earrings.
 - Women can wear one pair of small gold, silver or pearl earrings of the ball style (no larger than ¼ inch).
- Diamond studs can be worn with the Dinner dress uniforms.
- Necklaces, chains, suspenders, pens, handkerchiefs, etc...should not be visible.



Women Grooming Standards while in Uniform

- Hair should be neat and clean and above the collar (for men) or at the collar (for women).
- Women hair buns should not exceed three inches and pony tails should be inconspicuously fastened to the head. The bun may touch, but may not fall below the bottom edge of the back of the shirt collar or jacket collar, with exception to the foul weather parka.
- Fingernails: Men and women shall keep their nails clean. Women may wear nail polish, but the color shall be conservative and neutral in color. Decorative nail art is not authorized while in uniform.
- The hair claw shall be wingless; not to exceed 3 inches in length and 1 inch in width. The hair claw shall be black, navy blue, brown or a color similar to the individual's hair color and shall not interfere with the proper wearing of head gear (and/or safety gear). Restrict the wear of hair accessories while engaged in operational environments where there is a risk for foreign object damage (FOD) hazards or for personnel safety.
- Female hair style "locks" are authorized hair style, and present a balanced, neat, professional and well groomed appearance.
- The diameter of braids, cornrows, locks and twists allowance from ¼ inch to ½ inch with no more than a ¼ inch space between rows.
- Pony tails end shall be neatly and inconspicuously fastened, pinned or secured to the head at all times.



Men Grooming Standards while in Uniform

- Full and partial beards, van dykes, and goatees are authorized.
- In uniform, patches and spotty clumps of facial hair are not considered beards and are not authorized.
- The bulk of the beard (distance that the mass of facial hair protrudes from the skin on the face) shall not exceed 1 inch.
- Beards, sideburns, or mustaches if worn, shall be well groomed and neatly trimmed at all times in order not to present a ragged appearance.



Tattoos / Body Piercing / Brands

- Tattoos, body piercing, brands, intentional scarring or mutilation, or modifications of the head and neck are prohibited unless required for legitimate medical purposes.
- Any markings on the neck area may not show above the collar line of the Tropical Blue shirt along the back and sides of the neck, nor the line of this shirt at the front of the neck.
- Furthermore, any markings of the body that are contrary to the published basic core values of the Coast Guard, show political endorsement, advocate or symbolize all types of discrimination, sexual images, supremacist or extremist groups, gangs, drug use, are prejudicial to good order and discipline, or are of a nature to bring discredit upon the service are prohibited.
- Refer to Tattoo and Body Markings Policy for Coast Guard Accessions, COMDTINST 1000.1(series).



Prohibited Wear of Auxiliary Uniform

- In public places of dubious reputation.
- When engaged in political activities.
- When in a foreign country unless specifically authorized.
- Don't wear distinctive parts of the uniform or insignia with civilian clothes when not on duty.
- Auxiliarists must adhere to uniform policies when engaged in U.S. Coast Guard or Coast Guard Auxiliary programs and activities.



Where to buy uniform and uniform items

Coast Guard Exchange
(CGX)



USCG Auxiliary Center
(AUXCEN/Shop Auxiliary)

USCG Installation Lucky Bags

USCGA Used Uniform Exchange

How:

- <http://www.ShopCGX.com>
- For Uniform Web Orders:
- 1-800-874-6841

Items available:

- Tropical Blue, Service Dress Blue & ODU uniforms
- Coats, Foul Weather Parkas, Windbreakers, and Sweaters
- USCG AUXILIARY and nametapes
- Garrison and Combination caps
- Shoes & boots



Where to buy uniform and uniform items

Your local Coast Guard Exchange
(CGX)



USCG Auxiliary Center
(AUXCEN/Shop Auxiliary)

USCG Installation Lucky Bags

USCGA Used Uniform Exchange

How:

- Once you have an ID card you can gain access to the CGEX
- Access for newer members in AP status can be obtained when accompanied by another member
- On line exchange (ShopCGX.com.)

Items available:

- Tropical Blue, Service Dress Blue, Winter Dress Blue, & ODU uniforms
- Combination, Garrison, and ball caps
- Shoes and boots



Where to buy uniform and uniform items

Coast Guard Exchange
(CGX)

USCG Auxiliary Center
(AUXCEN/Shop Auxiliary)

USCG Installation Lucky Bags

USCGA Used Uniform Exchange



How:

- <http://www.shopauxiliary.com>
- Click on “District Online Members Store”

Items available:

- Shoulder boards
- Name tags
- Officer devices
- Qualification insignia
- Sleeve lacing
- And much more



Where to buy uniform and uniform items

Coast Guard Exchange
(CGX)

USCG Auxiliary Center
(AUXCEN/Shop Auxiliary)

USCG Installation Lucky Bags

USCGA Used Uniform Exchange



How:

- Talk to your FSO-HR

Items available:

- Depends upon the local stock

Member service:

- If your local area or USCG installation does not operate or maintain a lucky bag, consider the possibility of starting one



Where to buy uniform and uniform items

Coast Guard Exchange
(CGX)

USCG Auxiliary Center
(AUXCEN/Shop Auxiliary)

USCG Installation Lucky Bags

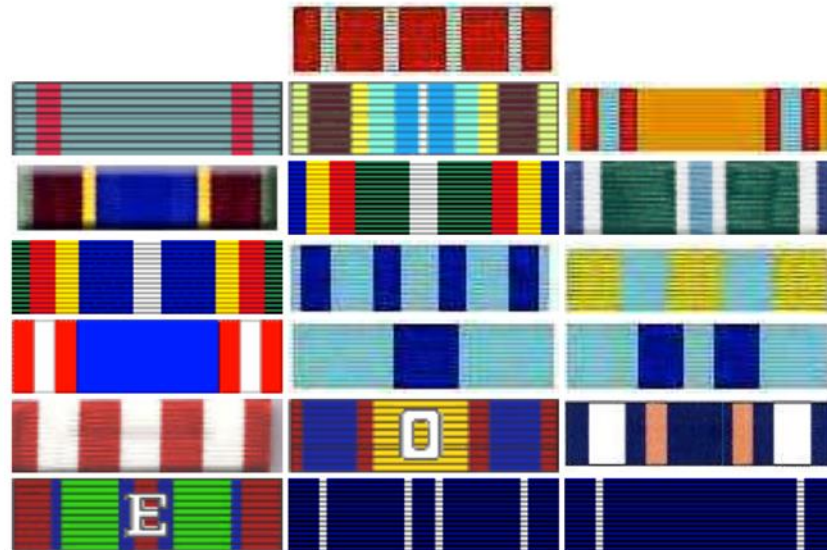
USCGA Used Uniform Exchange



- How:
 - Check with your local District Used Uniform store
- Items Available:
 - Dependent upon changing availability



Ribbons Have an Order



<http://www.uscg.mil/uniform/Ribbons.asp>



Ribbons

- Auxiliarist wear one, two, or three ribbons in a single row.
- They are worn in order of precedence, high to low, from inboard to outboard.
- When wearing more than one row, the precedence is across rows, from top down.
- When wearing ribbons, Auxiliarist may wear either all ribbons authorized, their three senior ribbons, or their choice of nine of their authorized ribbons.
- When wearing more than one row of ribbons, all rows except the uppermost will contain three ribbons.



Individual Awards and Medals

- CG AUXILIARY DISTINGUISHED SERVICE AWARD
- AUXILIARY LEGION OF MERIT
- PLAQUE OF MERIT
- AUXILIARY MERITORIOUS SERVICE AWARD (“O” Device Option)
- AWARD OF OPERATIONAL MERIT
- AUXILIARY COMMENDATION AWARD
- AUXILIARY ACHIEVEMENT AWARD (“O” Device Option)
- AUXILIARY COMMANDANT LETTER OF COMMENDATION (“O” Device Option)



5/16" Gold Star = Additional Award

5/16" Silver Star = 5 Gold Stars

Coast Guard Sustained Auxiliary Service Award

- SUSTAINED AUXILIARY SERVICE AWARD (750 Hours)



3/16" Bronze Star = Additional Award

3/16" Silver Star = 5 Bronze Stars

Bronze Hourglass = 7,500 Hours (no stars are worn with hour glass devices)

Gold Hourglass = 15,000 Hours

Silver Hourglass = 25,000 Hours

One-Time Unit and Team Awards

- TRANSPORTATION 9-11 MEDAL
- PRESIDENTIAL UNIT CITATION
- DOT SECRETARY'S OUTSTANDING UNIT AWARD
- CG BICENTENNIAL UNIT COMMENDATION
- TRANSPORTATION 9-11 RIBBON



No Stars

Unit and Team Awards

- CG UNIT COMMENDATION (“O” Device Option)
- CG MERITORIOUS UNIT COMMENDATION (“O” Device Option)
- CG MERITORIOUS TEAM COMMENDATION (“O” Device Option)



5/16" Gold Star = Additional Award

5/16" Silver Star = 5 Gold Stars



Operation Awards

- AUXILIARY OPERATIONAL EXCELLENCE AWARD
- AUXILIARY HUMANITARIAN SERVICE AWARD
- SPECIAL OPERATIONS SERVICE RIBBON



3/16" Bronze Star = Additional Award

3/16" Silver Star = 5 Bronze Stars

(No E devices for the Auxiliary Operational Excellence Award)

Qualifications and Training

- CG RECRUITING SERVICE RIBBON
- AUXILIARY SPECIALTY TRAINING RIBBON (Non-AUXOP Members ONLY.)
- AUXILIARY OPERATIONS PROGRAM RIBBON (“E” Device for QE’s)
- MARINE SAFETY TRAINING RIBBON
- AUXILIARY EXAMINER PROGRAM RIBBON
- AUXILIARY INSTRUCTOR PROGRAM RIBBON
- PUBLIC AFFAIRS SPECIALIST AWARD

Removed when AUXOP is earned



3/16” Bronze Star = Additional Award/Qualification/AUXOP Credit

3/16” Silver Star = 5 Bronze Stars

(No stars for the CG Recruiting Service or Instructor Program Ribbons)



Flotilla Achievement Award

- FLOTILLA MERITORIOUS ACHIEVEMENT AWARD



5/16" Gold Star = Additional Award

5/16" Silver Star = 5 Gold Stars

Annual Service Awards

- AUXILIARY RECRUITING SERVICE AWARD
- AUXILIARY MEMBERSHIP SERVICE AWARD (5 years)

- AUXILIARY PE SERVICE AWARD
- AUXILIARY VE/MDV SERVICE AWARD
- AUXILIARY OPRNS SERVICE AWARD

Worn in the order earned



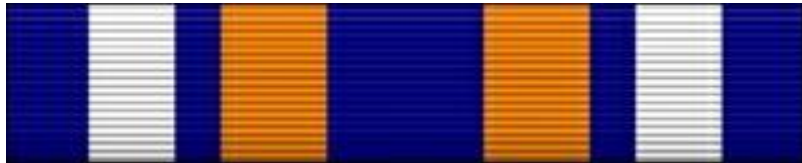
3/16" Bronze Star = Additional Award

3/16" Silver Star = 5 Bronze Stars

No Longer Authorized!!!

“V” Devices must be removed!

(“V” and “X” devices are no longer authorized for Auxiliarists, are not grandfathered, and may no longer be worn.)



AUTHORIZED



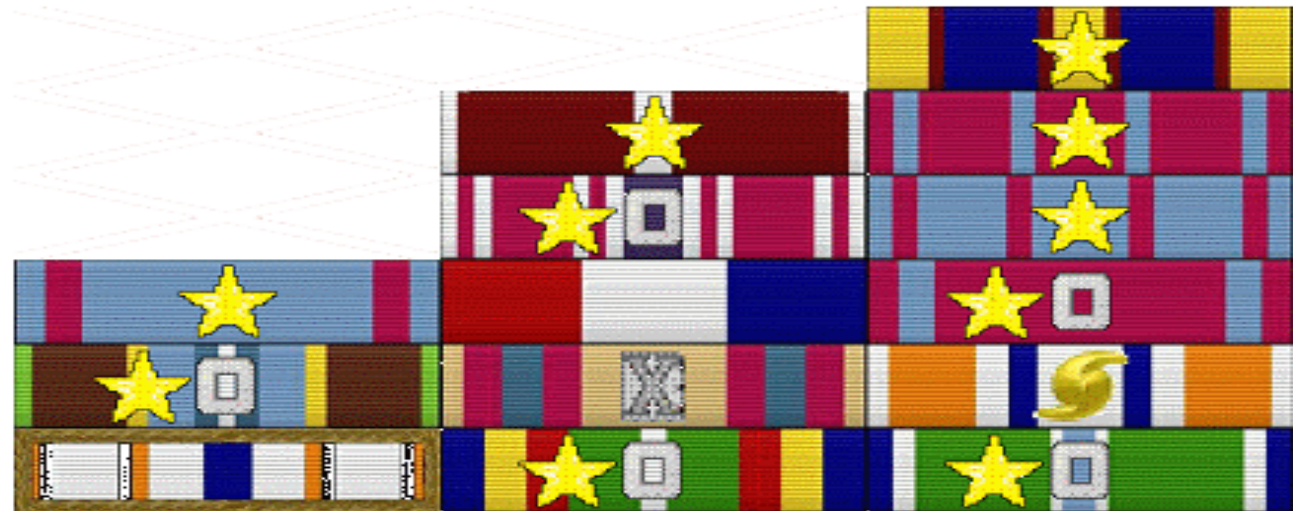
NOT AUTHORIZED

Wearing Ribbons (Rack Configuration)

Ribbons are worn in rows of 3 except:



- When a jacket lapel obscures more than 1/3 of a medal, it can be worn in successively decreasing rows



*** “Offset” ribbon mounts can be purchased from 3rd parties outside the UDC.

Wearing Medals and Devices

- Devices are worn on medals, similarly as on ribbons except for the “E” device is not worn on the Operations miniature medal
- Minature devices are centered horizontally and vertically
- 1/8” stars are used for all miniature medals.



Wearing Medals (Rack Configuration)

Differing from ribbons:

- Medal mounts change in width, deepening on the number of medals and rows

Miniature Medals					
Number of medals	Number of Rows	Top Row	2nd Row	3rd Row	4th Row
1-5	1	1-5	-	-	-
6	2	3	3	-	-
7	2	3	4	-	-
8	2	4	4	-	-
9	2	4	5	-	-
10	2	5	5	-	-
11	3	3	4	4	-
12	3	4	4	4	-
13	3	3	5	5	-
14	3	4	5	5	-
15	3	5	5	5	-
16	4	4	4	4	4
17	4	3	4	5	5
18	4	3	5	5	5
19	4	4	5	5	5
20	4	5	5	5	5



Ribbon Rack Options

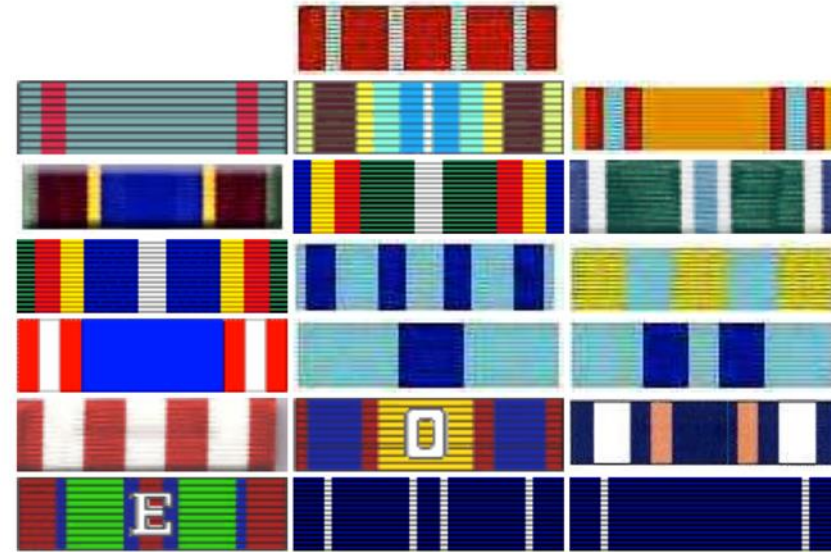
Members may wear all ribbons earned

or

Wear 9 ribbons earned of their choice

or

Wear the senior 3 ribbons earned



Ask Your Flotilla Commander

- It is highly recommended that New Members of the Coast Guard Auxiliary speak with their Flotilla Commander first about procuring either the Tropical Blue and/or Operational Dress Uniform, as these will be appropriate for a majority of USCGAUX activities.



Uniform Division



Human Resources Directorate

David S. Mc Artin, Director, Human Resources Directorate

James A. Umberger, Deputy Director, Human Resources Directorate

Division Chief

COMO E. Lee Ward, Division Chief - Uniforms

comoward@icloud.com

Branch Chiefs

Rick Harrach, Branch Chief - Uniform Division (Pacific)

rcharrach@outlook.com

Mark O'Dell, Branch Chief – Uniform Division (Atlantic West)

perfectelu14@yahoo.com

Sherry Kisver, Branch Chief- Uniform Division (Atlantic East)

sherrykivser@gmail.com

A special thank you to Todd Monis, former Human Resources Director and USCG Auxiliary representative the Coast Guard Uniform Board

